

## Exercise 43

For the following exercises, use the graphs of  $f$ , shown in Figure 4, and  $g$ , shown in Figure 5, to evaluate the expressions.

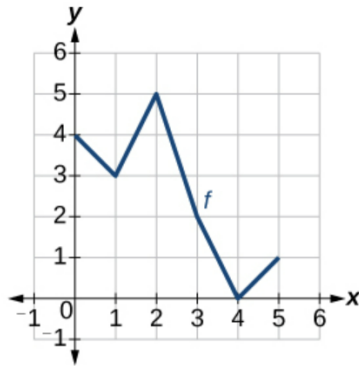


Figure 4

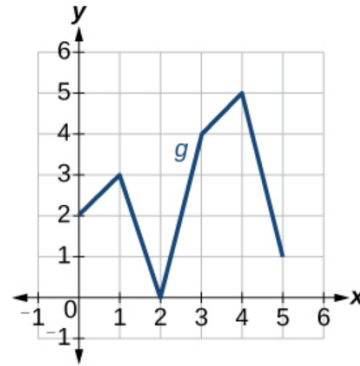
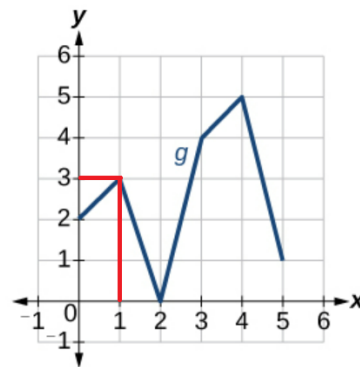
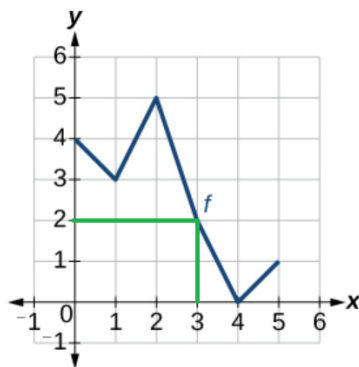


Figure 5

$$f(g(1))$$

### Solution

Notice from the graphs that  $g(1) = 3$  and  $f(3) = 2$ .



Therefore,

$$f(g(1)) = f(3) = 2.$$